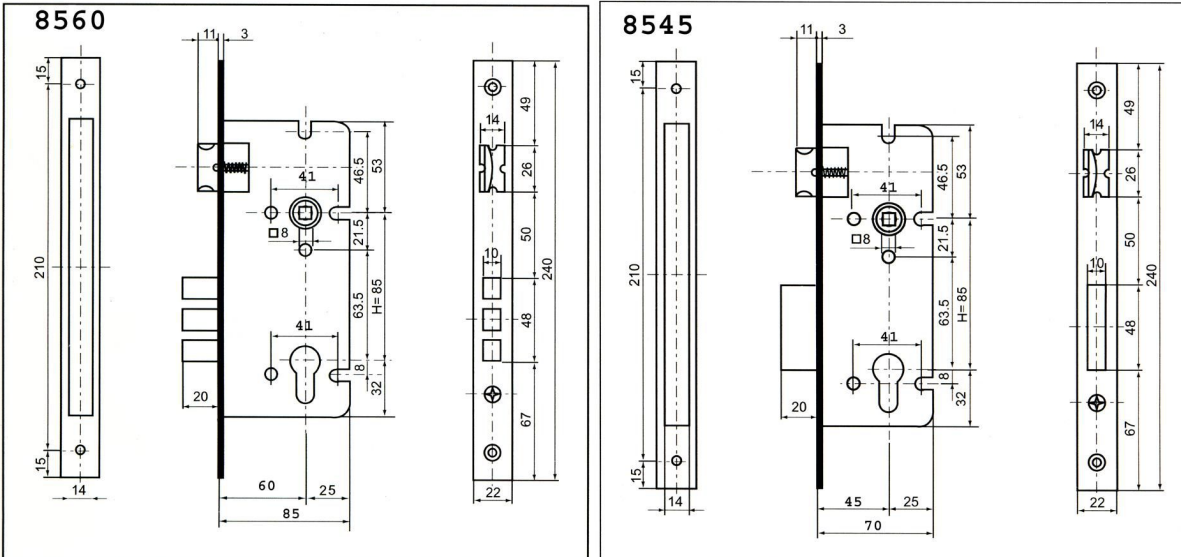


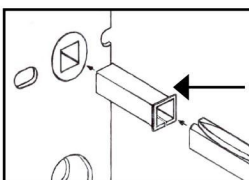
# PROTECTOR UPRIGHT MORTICE LOCKS 8545 & 8560

- Cylinder Key operates Deadbolt (Double-throw) & Retracts Latchbolt
- Latch easily reversible without opening case
- Satin Brass Fine & Satin Chrome Fine finishes
- Rebate Set available (ref 510R-MK2)
- Available with 45mm or 60mm Backset
- Supplied with all fitting screws including Cylinder Tie-screw



8560-SBF

ITEM NO.	FINISH	BACKSET	OVERALL
8545-PB	Polished Brass	45mm	70mm
8545-CP	Chrome	45mm	70mm
8545-SBF	Satin Brass Fine	45mm	70mm
8545-SCF	Satin Chrome Fine	45mm	70mm
8560-PB	Polished Brass	60mm	85mm
8560-CP	Chrome	60mm	85mm
8560-SBF	Satin Brass Fine	60mm	85mm
8560-SCF	Satin Chrome Fine	60mm	85mm
<b>Rebate Sets-This Rebate set suits all Protector &amp; most other 85 mm Pitch Locks</b>			
510R-MK2-RH-SBF	Rebate Set-Right Hand-Satin Brass-Suit 85mm Pitch Locks		
510R-MK2-RH-SCF	Rebate Set-Right Hand-Satin Chrome-Suit 85mm Pitch Locks		
510R-MK2-LH-SBF	Rebate Set-Left Hand-Satin Brass-Suits 85mm Pitch Locks		
510R-MK2-LH-SCF	Rebate Set-Left Hand-Satin Chrome-Suits 85mm Pitch Locks		



Precision Formed Stainless Steel Sleeve available to reduce 8mm  $\varnothing$  Lock Follower to suit 7.6mm  $\varnothing$  Spindles.



The full range of Protector Series Cylinders is detailed in this catalogue.



Lock & Door Hardware Distributors

**PROTECTOR**  
SERIES

## TEST REPORT – PROTECTOR® 735 MORTICE LOCK

On 11th January 1998 the testing equipment registered one million operations of rotating the follower to withdraw latch bolt as well as locking and unlocking the deadbolt – and still going. During comparative tests, where all brands of locks thus tested were fitted into the same very substantial hardwood block complete with cylinders, a steel claw was placed over the fully extended locking bolt and a gradually increasing force applied similarly to what can be expected during a “jemmy” attack. A reading of the torque was taken when:

- a) The particular bolt started to deform but leaving the lock operable
- b) When deformation rendered the unlocking action arrested but bolt still holding fast
- c) When the bolt latch or bolt or both clearly broke away from the lock body indicating a pass.

	A	B	C	
Lock 1	35Nm	50Nm	50.5Nm	Famous “Architectural” one bolt mortice lock you are probably using right now
Lock 2	40.5Nm	52Nm	53.5Nm	Well known “Architectural” one bolt mortice lock
Lock 3	60Nm	72Nm	140Nm	Not so well known “Architectural” one bolt mortice lock
Lock 4	100Nm	140Nm	167+Nm	735 x 3.0 Protector two bolt mortice lock – bolt returns perfectly to shape at 100Nm, difficult to unlock at 140Nm, bolt arrested but holding – test discontinued at 167Nm

The described tests have been conducted in our own works (some on behalf of the makers of involved locking devices) and always with at least one trade witness present. Top quality American made instruments with “captive readout” mechanisms have been used to avoid “interpretation” of results. It is fair to say that different test methods may show different results but will most certainly show similar differences of performance. Newton meters (Nm) are somewhat difficult to evaluate and even comprehend but it can be said that the top readings achieved would be similar to the force an average adult male could produce using an 18” jemmy bar – which is quite considerable indeed. The results should be seen to be comparative. The findings are strictly our own and no doubt others with different interests would want to disagree.

Without prejudice

\*It would be advisable to read up on the fairly “modern” measure of Newton meters.

There is a special rebate set available as well as a special electric strike/keeper and a “steel lock box” to assist the wrought iron and steel gate industry. With such quality items made in Europe and at prices quite below that of any worthy competitor, how can one afford not to support the range?

Gerhard B. Savati  
Director  
Dip.Eng (Ger)  
WorkMaster(Ger)

PS.

During April 2002 the PROTECTOR 735 Combination Mortice Lock was tested by an independent and accredited Australian testing laboratory. The Specification Requirement was AS 4145.2

In both Strength and Durability Tests the PROTECTOR 735 exceeded the requirements to qualify for the highest rating S3 / D3 (500,000 Cycles) respectively.

We believe that the PROTECTOR 735 is the only Mortice Lock on the Australian market to meet S3 / D3 requirements under AS 4145.2

There are more than 250,000 Protector Mortice Locks in daily use in Australia. Can the Lock You last installed or specified match these specifications?

